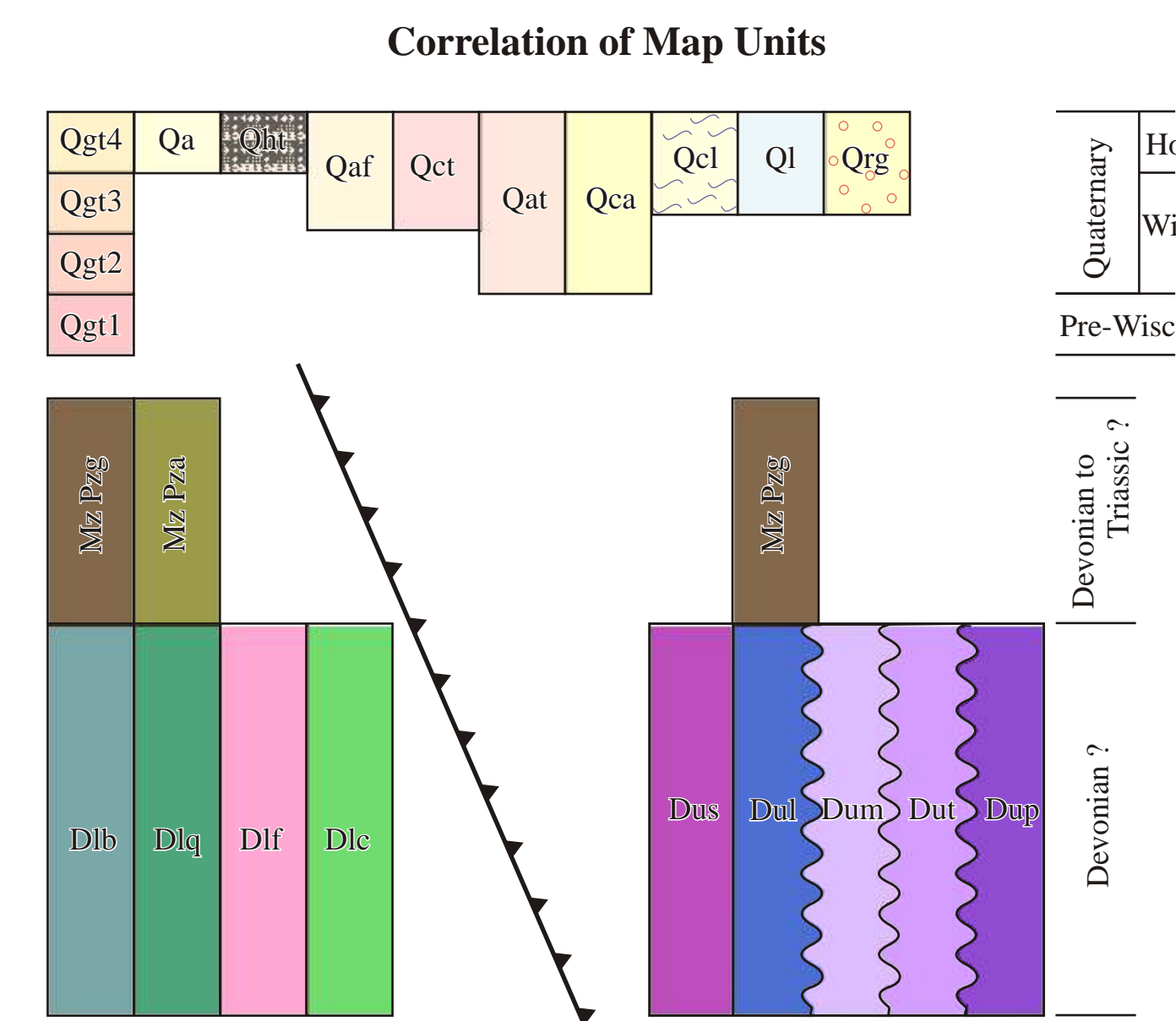


- Geologic Units**
- UNCONSOLIDATED DEPOSITS**
- Qa - Holocene alluvium
 - Qaf - Alluvial fan deposit
 - Qht - Placer mine tailings
 - Qat - Alluvial terrace deposits
 - Qct - Colluvium and talus deposits
 - Qca - Colluvial and alluvial deposits, undifferentiated
 - Qsl - Solifluction lobe deposits
 - Qcl - Colluvial landslide block
 - Ql - Lacustrine (Lake) deposits
 - Qrg - Rock glacier deposits
 - Qgt4 - Late Wisconsin to Holocene glacial till
 - Qgt3 - Glacial till and outwash of Itkillik II glaciation
 - Qgt2 - Glacial till and outwash of Itkillik I glaciation
 - Qgt1 - Glacial till and outwash of Sagavermirkot or possibly older glaciation

- BEDROCK DEPOSITS**
- Upper Plate Units**
- Bx - Undifferentiated bedrock
 - Mz Pzg - Meta-igneous greenstone
 - Dup - Gray, fine to medium grained, carbonaceous, fissile, platy phyllite
 - Dum - Quartz chlorite, muscovite schist; includes meta-turbidite schist section as observed in unit Dut
 - Dut - Coarse to fine grained, rhythmically layered, meta-turbidite schist and phyllite
 - Dul - Light gray, rounded, locally massive, calcareous meta-sandstone and quartz-mica schist
 - Dus - Quartz rich, blocky, muscovite-schist in eastern portion of map area
- Lower Plate Units**
- Mz Pza - Mafic meta-volcanic agglomerate and flows
 - Mz Pzg - Meta-igneous greenstone
 - Dlc - Chlorite-rich, albite bearing, calcareous, tuffaceous schist
 - Dlb - Dark gray to black, finely laminated, fine grained, quartz-mica, meta-mudstone schist
 - Dlq - Mica quartzose schist; locally quartzite
 - Dlf - Light gray, tan weathered, K-spar-rich, felsic meta-igneous schist; possibly metamorphosed felsic tuff

- Map Symbols**
- Plunge and axis of isoclinal fold (f1), mineral lination (ML), crenulation (C), or pencil structure (P)
 - Direction and plunge of overturned syncline
 - Direction and plunge of syncline
 - High angle fault; Arrows show direction of movement; U=upthrown side D=downthrown side; Headed arrow shows direction of dip with dip angle where available.
 - Thrust fault; teeth are directed into upper plate
 - Lateral and Terminal limit of glaciation; (not a deposit)
 - Approximate cirque headwall; hatched lines show approximate upper limit of cirque basin; (not a deposit)
 - Ice marginal meltwater channel showing direction of flow
 - Strike and dip of foliation
 - Strike and dip of cleavage
 - Strike and dip of joints
 - Mines and prospects
 - Location of glacial erratic



Geologic Map of the Chandalar Mining District, Brooks Range, Northern Alaska

by Thomas K. Bundtzen and Gregory M. Laird

Prepared for Little Squaw Gold Mining Company

